

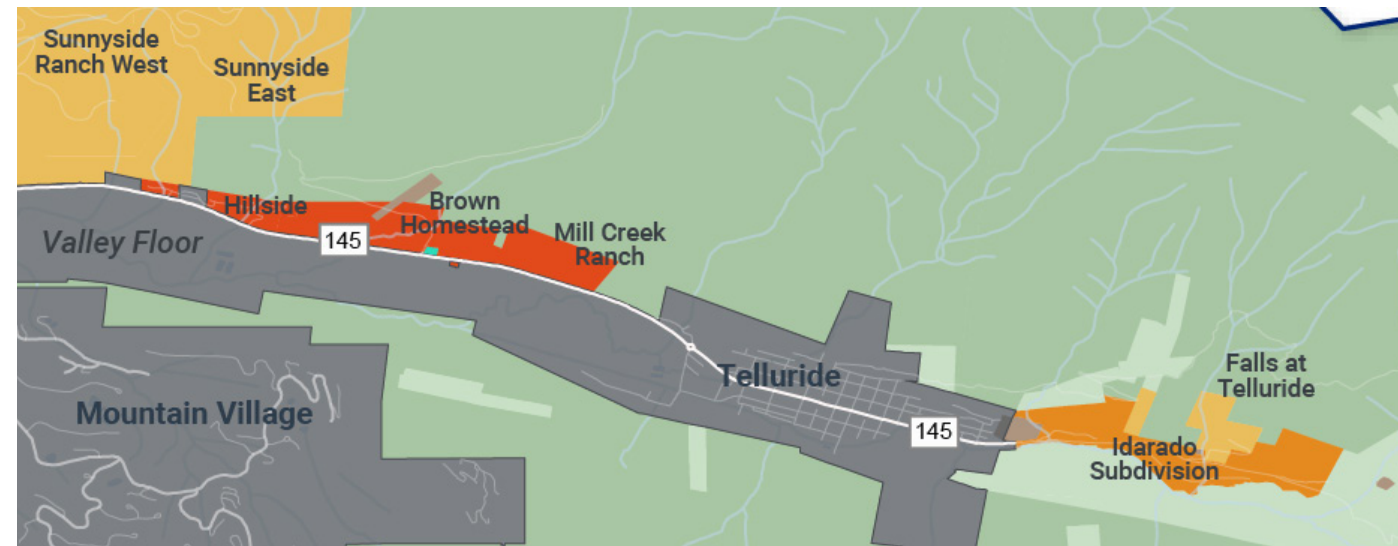
FUTURE LAND USE OPPORTUNITIES

A Future Land Use Map is an important part of any Master Plan, providing direction for the community and decision makers on the types of development that is appropriate in different areas into the future. Based on the constrained lands analysis,

existing conditions and trends analysis, and community feedback, the following future land use categories are identified for the east end. These categories are described in more detail in the following pages.



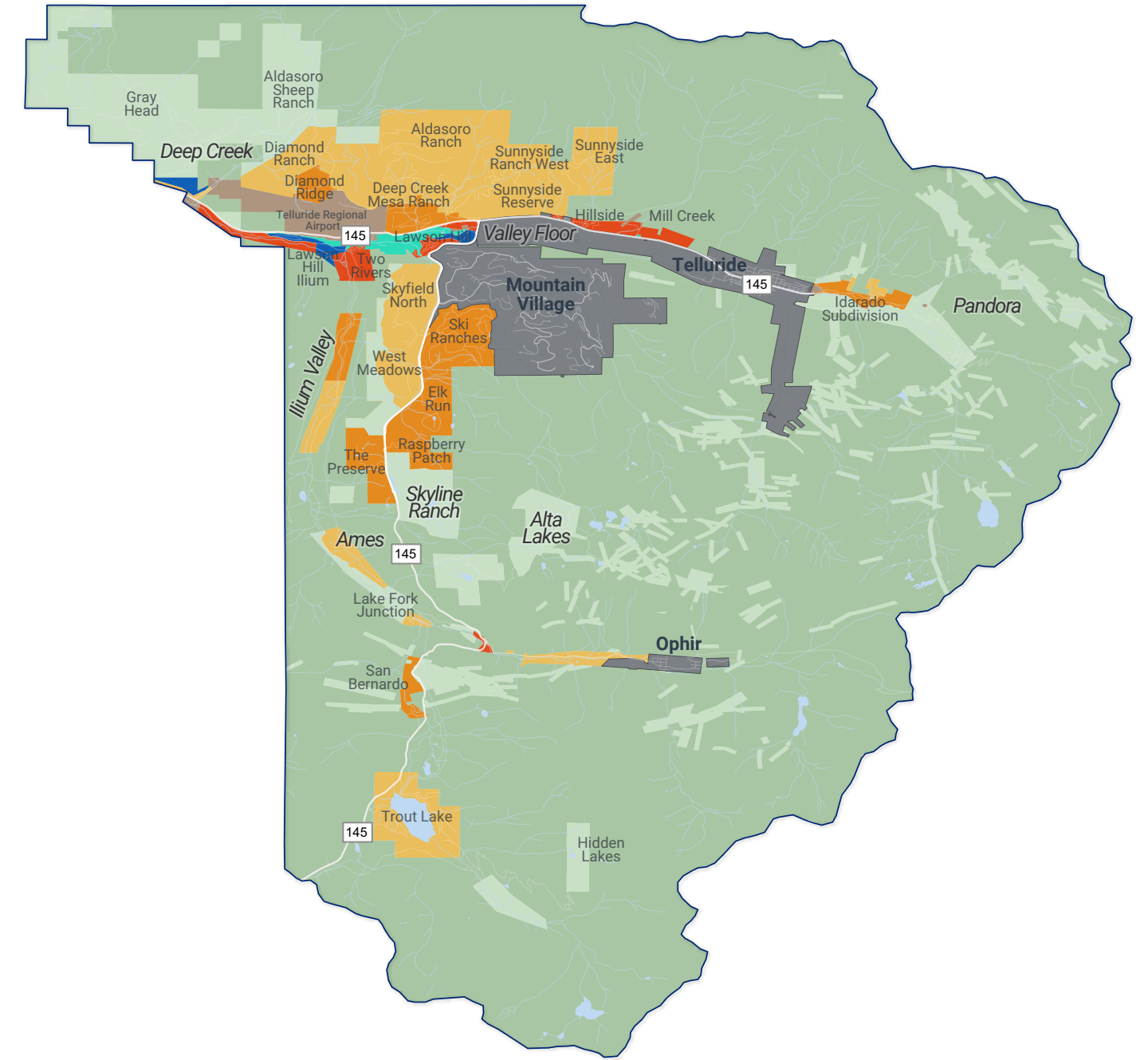
Map 9: San Miguel County East End Future Land Use Map, Lawson Hill and Surrounding Areas. Source: Design Workshop, San Miguel County GIS Data



Map 10: San Miguel County East End Future Land Use Map, Hillside and Surrounding Areas. Source: Design Workshop, San Miguel County GIS Data

FUTURE LAND USE OPPORTUNITIES

- Residential Low (RL) - (1 unit per 7-35 acres)
- Residential Medium (RM) - (1 unit per 1-7 acres)
- Residential High/Mixed Use (RH/MU) - (1 unit per acre or less)
- Commercial/Industrial (C/I)
- Public / Institutional (P/I)
- Conservation Areas (F) - (1 unit per 35+ acres)
- Parks and Open Space (P/OS)



Map 11: San Miguel County East End Future Land Use Map. Source: Design Workshop, San Miguel County GIS Data